

UKS2 Meet the teacher

Welcome to Elm!



“Be happy. Be proud. Shine!”

Expectations



- We show respect for school equipment and other children's equipment and belongings.
- We look after each other and we are positive role models for the school.
- We are resilient.
- We are determined to complete pieces of work to the best of our ability.
- We are honest if we need some help or support.
- We always try our best and believe that we can achieve!

Curriculum

	<i>Autumn 1</i>	<i>Autumn 2</i>	<i>Spring 1</i>	<i>Spring 2</i>	<i>Summer 1</i>	<i>Summer 2</i>
Science	Properties and changes of materials	Forces and Magnets	Earth and Space		Living things and Habitats	
Topic	History: Ancient Egypt	Geography: Trade and Economics	History: Mayan Civilisation	Geography: Amazing America	History: Ancient Greece	Geography: Fieldwork
Art/DT	DT: Construction (structures)	Art: Wire sculpture	DT: Construction mechanical	Art: Drawing	DT: Food	Art: Graffiti and Street Art
PSHE	Respecting Relationships	What is bullying and why are friends important?	Online safety and online relationships.	Keeping safe in the community.	Keeping emotionally healthy.	Keeping physically healthy.

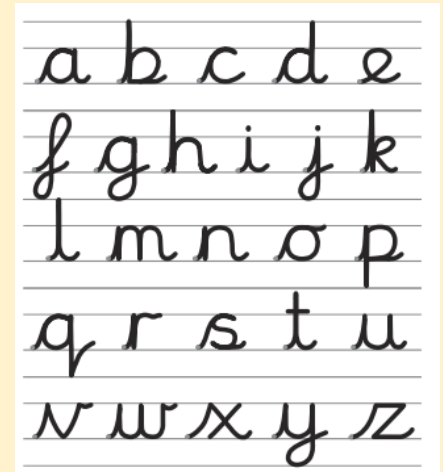
Pupils also study RE, French, PE, music (ukelele) and computing all year round.

Key Skills

- Punctuation
- Times tables
- Organisation - equipment packs
- Cursive handwriting
- High frequency spelling words

Times Table - 12x12

2	3	4	5	6	7	8	9	10	11
2	3	4	5	6	7	8	9	10	11
4	6	8	10	12	14	16	18	20	22
6	9	12	15	18	21	24	27	30	33
8	12	16	20	24	28	32	36	40	44
10	15	20	25	30	35	40	45	50	55
12	18	24	30	36	42	48	54	60	66
14	21	28	35	42	49	56	63	70	77
16	24	32	40	48	56	64	72	80	88
18	27	36	45	54	63	72	81	90	99
20	30	40	50	60	70	80	90	100	110
22	33	44	55	66	77	88	99	110	121
24	36	48	60	72	84	96	108	120	132



Homework platforms

All logins can be found in Reading Record books and will be sent home as a magnet for you to stick on your fridge or a radiator.



Spelling Shed

Minimum 4
times per week

*Practise the
weekly spelling
words before the
test on Friday.*



Minimum 4
times per week

*Year 5 and 6
children are
expected to
practise all times
tables up to 12.*



MathShed

Minimum 4 times
per week

*To replace
MyMaths.
Logins to follow...*

Reading

- Bring reading books in to school daily
- Reading improves communication skills and encourages imagination
- Please make sure your child is reading daily at home
- Children are able to independently read and sign their own reading records
- Try to read a range of texts such as books, comics, magazines and newspapers - You can find all of these at our local library in Eccles!

The more that you read,
The more things you will know.
The more that you learn,
The more places you'll go.
-Dr. Seuss

Timetable

	Monday	Tuesday	Wednesday	Thursday	Friday
8:30 – 8:45	Morning Tasks	Morning Tasks	Morning Tasks	Morning Tasks	Morning Tasks
8:45	Assembly	Guided Reading	Guided Reading	Guided Reading	Assembly
9.00	Guided Reading	English	English	English	Guided Reading
9.30	English				English
10.30-10:45	Break				
10.45	Maths	Maths	Maths	Maths	Maths
12:00	Lunchtime				
1:00	Music	Singing assembly	PE	History	Science
	DT	PSHE			
		PE	French		
2:55	Class Reader	Class Reader	Class Reader	Class Reader	Class Reader
3.15	Home time				